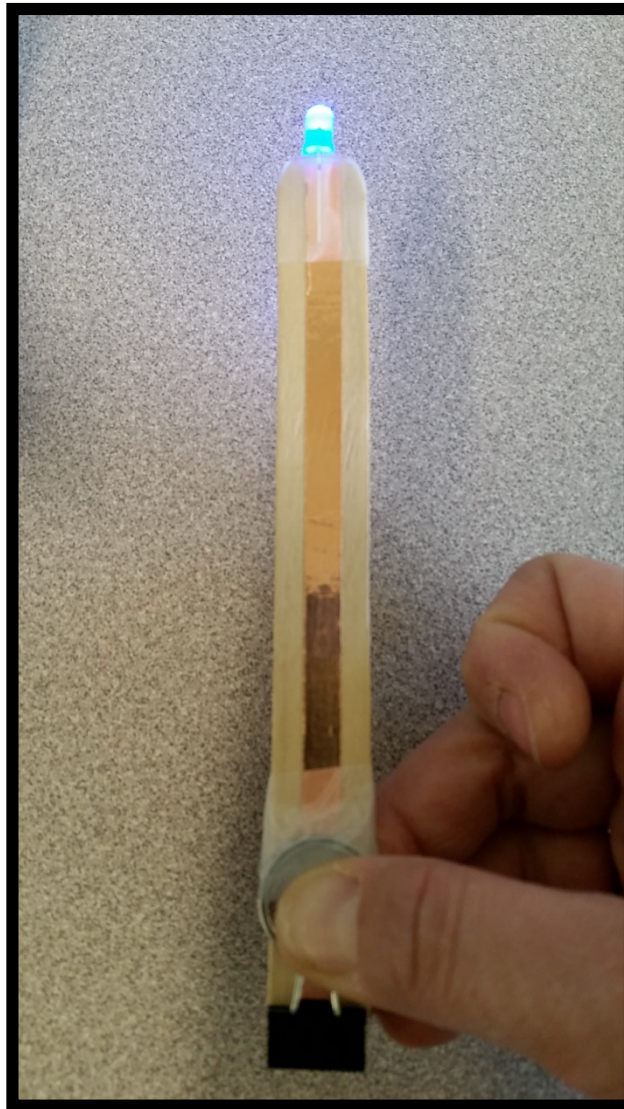


# POPSICLE STICK FLASHLIGHTS

*Introduction to electricity concepts.*

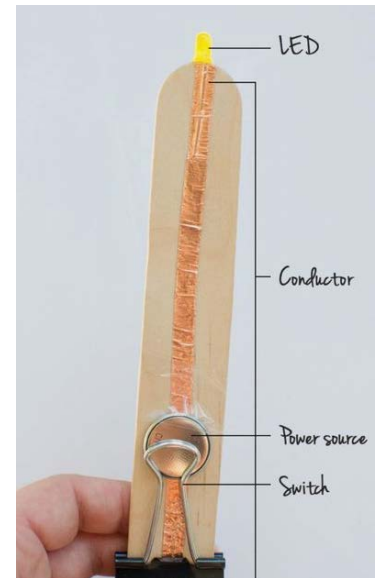


S.D. #33 - Chilliwack

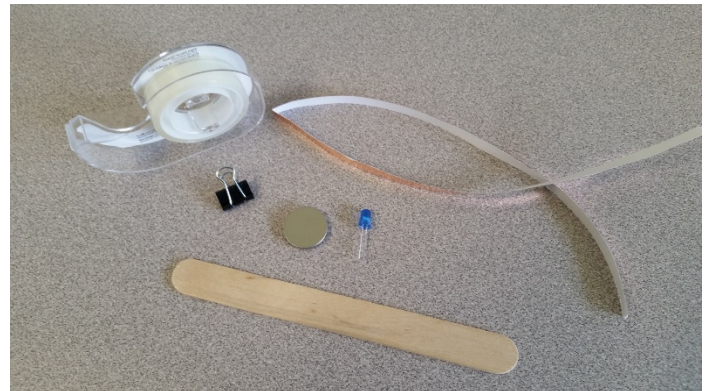


## Tools & Materials:

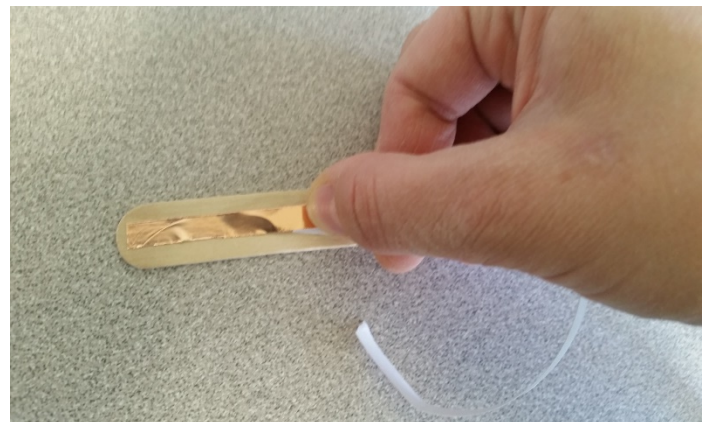
- CR2032 Watch batteries
- Large popsicle sticks
- 1" Binder clips
- Assorted LED mini lights
- Copper foil tape or Foil insulation tape
- Scotch tape
- Good quality scissors



## I. Gather Materials



2. Peel backing off of the copper foil and place on the popsicle stick in the center. Running length wise.

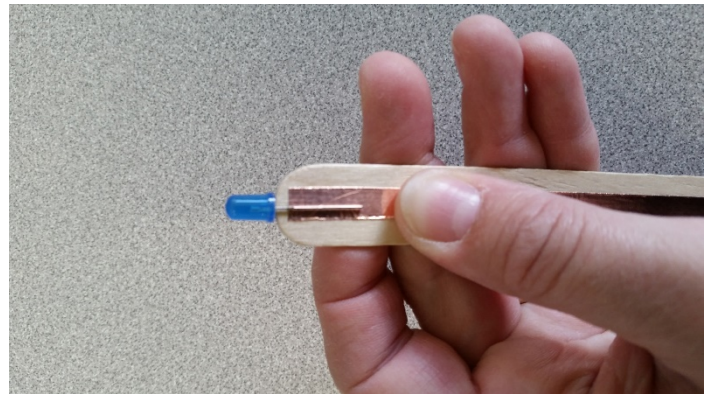




3. Smooth the conductive tape down and repeat on the back side of the stick.



4. Select your LED and gently separate the leads, just a tiny bit, so the LED leads fit over the end of your popsicle stick. Line them up in the center of your conductive tape.



5. Secure your LED in place using a piece of scotch tape. Be sure to wrap all the way around the end of your stick.



6. Collect your battery and place it on the conductive foil.



7. Secure your Battery in place using a piece of scotch tape. Be sure to only cover a portion of the battery.



8. Place your Binder clip on the end of your popsicle stick opposite your LED.



9. Fold the "legs" of the binder clip back towards your LED. In doing this you create a Switch, that will turn your flashlight on and off.

